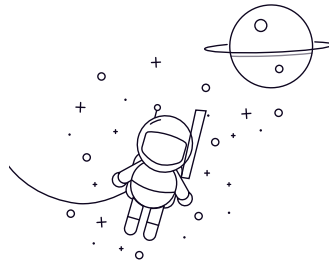
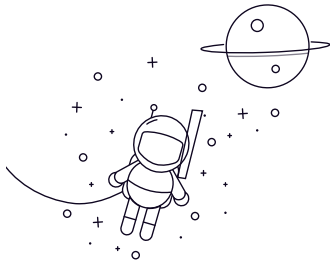


## Inch Miniature Flange Bearing



Bearing Number	Dimensions					Basic Load Rating		Limiting Speed (X1000 RPM)		Weight(Kg)
	d	D	Df	B	Wfs	Cr(N)	Cor(N)	Grease	Oil	
FR0	1.191mm	3.967mm	5.156mm	1.588mm	0.330mm	21	6	110	130	0.12
FR0zz	1.191mm	3.967mm	5.156mm	2.38mm	0.787mm	21	6	110	130	0.2
FR1	1.397mm	4.763mm	5.944mm	1.984mm	0.584mm	44	12	90	110	0.19
FR1zz	1.397mm	4.763mm	5.944mm	2.779mm	0.787mm	44	12	90	110	0.25
FR1-4	1.984mm	6.35mm	7.518mm	2.38mm	0.584mm	54	17	67	80	0.46
FR1-4 2RS	1.984mm	6.35mm	7.518mm	3.571mm	0.787mm	54	17	67	80	0.61
FR1-4zz	1.984mm	6.35mm	7.518mm	3.571mm	0.787mm	54	17	67	80	0.61
FR1-5	2.38mm	7.938mm	9.119mm	2.779mm	0.584mm	106	32	60	95	0.67
FR1-5 2RS	2.38mm	7.938mm	9.119mm	3.571mm	0.787mm	106	32	60	95	1.25
FR1-5zz	2.38mm	7.938mm	9.119mm	3.571mm	0.787mm	106	32	60	95	1.25
FR133	2.38mm	4.763mm	5.944mm	1.588mm	0.457mm	36	11	80	95	0.13
FR133zz	2.38mm	4.763mm	5.944mm	2.38mm	0.787mm	28	10	80	96	0.21
FR144	3.175mm	6.35mm	7.518mm	2.38mm	0.584mm	54	17	67	80	0.33
FR144zz	3.175mm	6.35mm	7.518mm	2.779mm	0.787mm	54	17	67	80	0.48
FR2	3.175mm	9.525mm	11.176mm	3.967mm	0.762mm	121	39	56	67	1.2
FR2 2RS	3.175mm	9.525mm	11.176mm	3.967mm	0.762mm	121	39	56	67	1.53
FR2zz	3.175mm	9.525mm	11.176mm	3.967mm	0.762mm	121	39	56	67	1.53
FR2-5	3.175mm	7.938mm	9.119mm	2.779mm	0.584mm	107	32	60	67	0.57
FR2-5 2RS	3.175mm	7.938mm	9.119mm	3.571mm	0.787mm	107	32	60	67	0.84
FR2-5zz	3.175mm	7.938mm	9.119mm	3.571mm	0.787mm	107	32	60	67	0.84
FR2-6	3.175mm	9.525mm	10.719mm	2.779mm	0.584mm	122	41	53	63	1.05
FR2-6 2RS	3.175mm	9.525mm	10.719mm	3.571mm	0.787mm	122	41	53	63	1.35

### Inch Miniature Flange Bearing

FR2-6zz	3.175mm	9.525mm	10.719mm	3.571mm	0.787mm	122	41	53	63	1.35
FR155	3.967mm	7.938mm	9.119mm	2.779mm	0.584mm	69	27	53	63	0.56
FR155zz	3.967mm	7.938mm	9.119mm	3.175mm	0.914mm	69	27	53	63	0.72
FR156	4.763mm	7.938mm	9.119mm	2.779mm	0.584mm	69	27	53	63	0.47
FR156 2RS	4.763mm	7.938mm	9.119mm	3.175mm	0.914mm	69	27	53	63	0.56
FR156zz	4.763mm	7.938mm	9.119mm	3.175mm	0.914mm	69	27	53	63	0.56
FR166	4.763mm	9.525mm	10.719mm	3.175mm	0.584mm	136	49	50	60	0.9
FR166 2RS	4.763mm	9.525mm	10.719mm	3.175mm	0.787mm	136	49	50	60	0.97